



LINYI GEELONG MACHINERY CO., LTD.

ADD: Yitang Town, Lanshan District, Linyi City, Shandong Province, China.

For more details, please contact via email: rongkuilee_2014@hotmail.com

Skype: leethinker1 Mobile: 86 15753963153

[General process introduction for OSB production line.](#)

OSB production line-words introduction

OSB board is made from small and medium-diameter wood logs via Chip preparation, drying, spreading and hot press section. Finished boards can be used for furniture, building, packing, vehicle and decoration and lamination.

1. Chip preparation section

Raw material is reduced into qualified chips by the flake machine(this machine must be imported from Germany and Italy), then the chips are transported to the wood chips big silo for storing.

2. Drying and sifting section

The flakes discharged from the wet flake bin are conveyed to the rotary dryer. Qualified core flakes are stored in core flake bin; oversize flakes are sent and transported to surface flake bin.

3. Glue regulating and applying section

After scaled, the core and surface flakes are to be effectively and uniformly mixed with qualified glue independently in their glue mixers respectively.

4. Forming and hot-pressing section

The surface and core flakes are sent into OSB forming machine, and forming on the mat conveyor uniformly. After processes of metal remover, pre-press, lengthwise saw, cross saw, accelerate conveyor, scaling conveyor, storing conveyor and loading conveyor, mats are transported to carrier and then to hot press. Rough boards after pressing are pushed to unloader via pallet.

5. Cooling and sizing section

BEST WISHES FOR OUR CUSTOMERS AND HOPE FOR GOOD BUSINESS NOW AND FUTURE!

LINYI GEELONG MACHINERY CO., LTD.

ADD: Yitang Town, Lanshan District, Linyi City, Shandong Province, China.

For more details, please contact via email: rongkuilee_2014@hotmail.com

Skype: leethinker1 Mobile: 86 15753963153

The rough board is conveyed to star-cooler for cooling, then the rough board goes through side trimming saw and become a qualified particle-board, stacked on the hydraulic lifter.

6. Lamination process

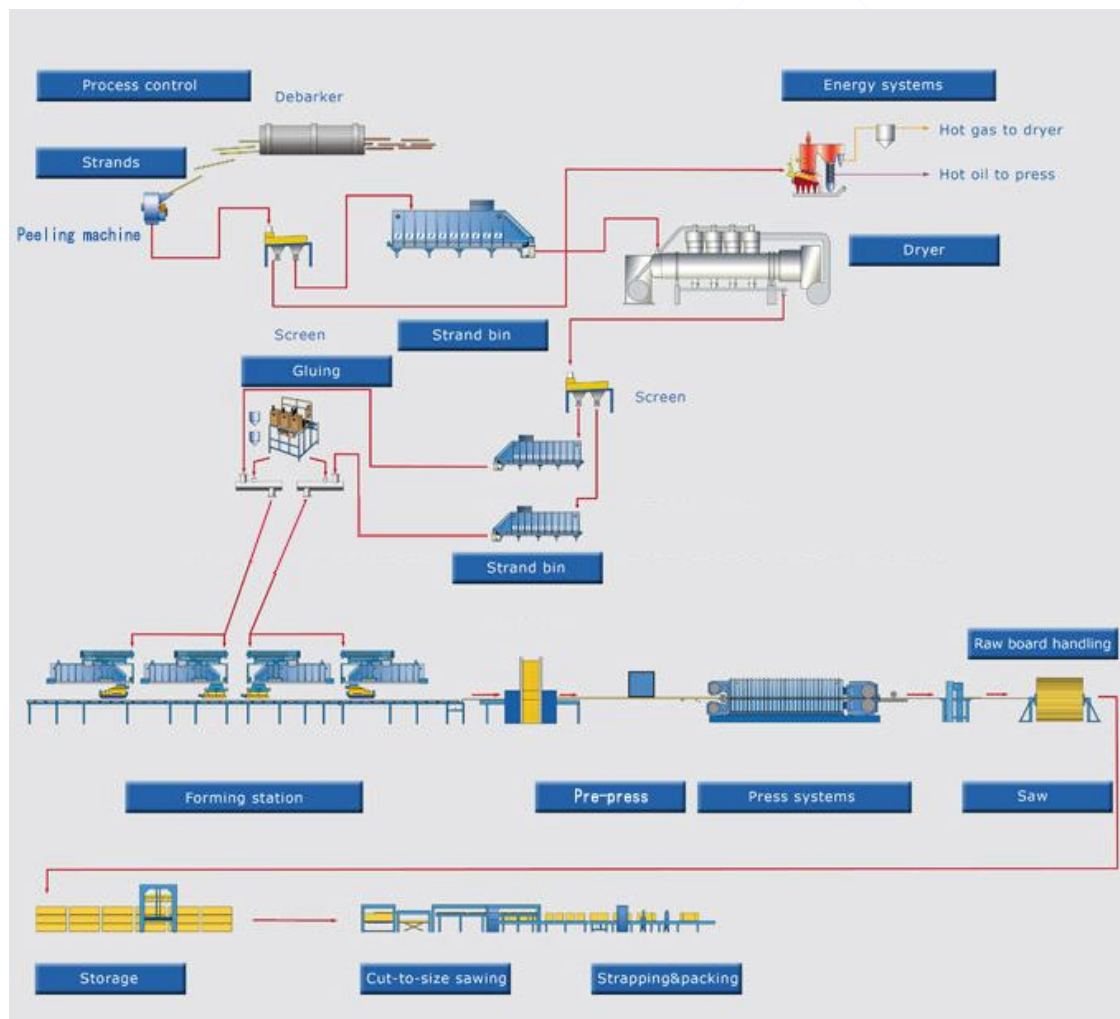
If you want to do the lamination for OSB boards, need do the lamination on OSB boards with veneer, then finally do the lamination with melamine paper on veneer. Then the finished double lamination OSB boards can be used to do the furniture.

OSB board production line-pics introduction-sample line



BEST WISHES FOR OUR CUSTOMERS AND HOPE FOR GOOD BUSINESS NOW AND FUTURE!

OSB board production line-drawing introduction



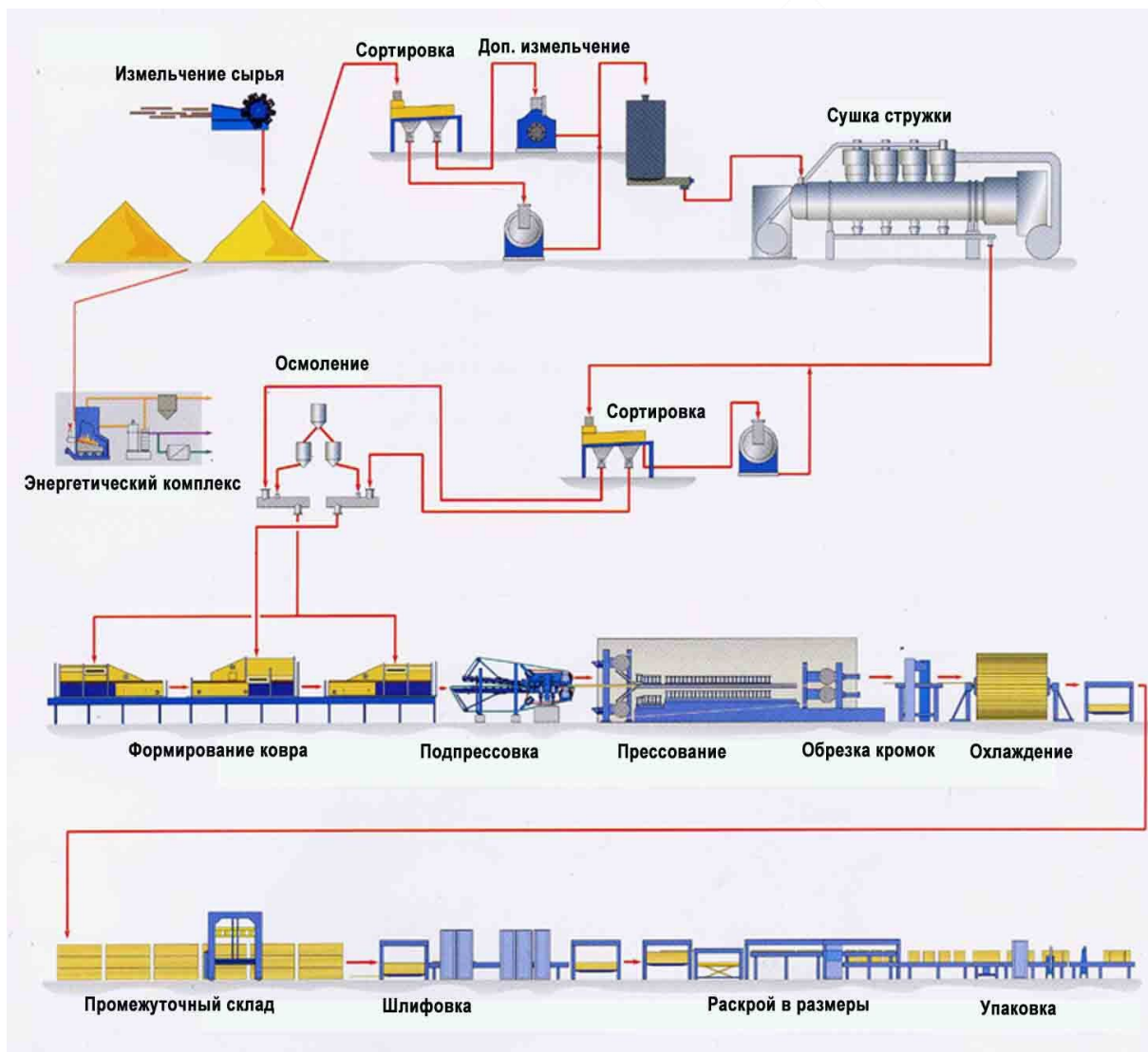
BEST WISHES FOR OUR CUSTOMERS AND HOPE FOR GOOD BUSINESS NOW AND FUTURE!

LINYI GEELONG MACHINERY CO., LTD.

ADD: Yitang Town, Lanshan District, Linyi City, Shandong Province, China.

For more details, please contact via email: rongkuilee_2014@hotmail.com

Skype: leethinker1 Mobile: 86 15753963153



BEST WISHES FOR OUR CUSTOMERS AND HOPE FOR GOOD BUSINESS NOW AND FUTURE!